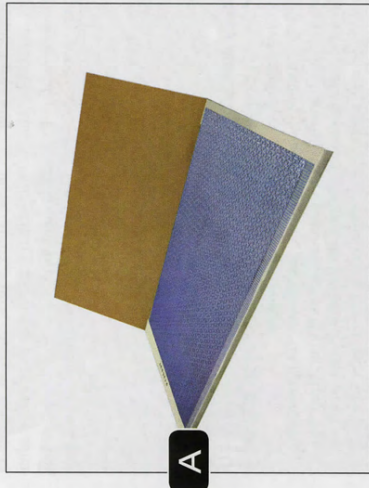


Product Showcase



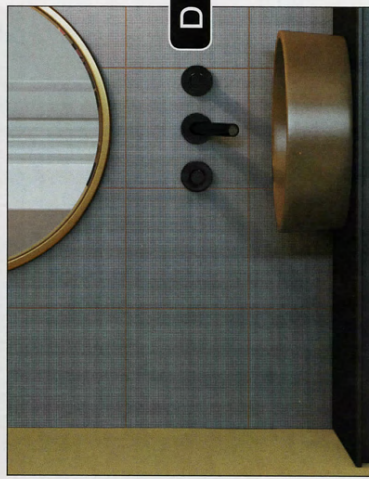
A



C



B



D



E



F



G



H

A

Ardex Americas recently made its **Ardex UI 720™ Flexbone®** Floating Uncoupling Membrane available in convenient sheets for purchase at Ardex distributors throughout North America. A revolutionary unbonded, floating uncoupling membrane for true 100% uncoupling, the Ardex UI 720 Flexbone sheets are designed for installer convenience on smaller jobs. Each sheet is 39 inches wide x 78.75 inches long (1 m wide x 2 m long) for 21.5 ft² (2 m²) of coverage per sheet. WWW.ARDEXAMERICAS.COM

B

Remy, a cement tile collection from **Bedrosians**, breathes new life into an old-world design. The cool sea blue tones, warm gray colors and mix of patterns in Remy can create exciting floors, backsplashes and walls. The eight distinctive 8- x 8-inch patterned designs can be used for whole floors or walls, as well as accents for walls. Six colors are offered, which can be used on their own or combined with the deco, giving you free reign for creativity. WWW.BEDROSIANS.COM

C

The goal of the new **Verde** Veritcale collection from **Ceramica Francesco De Maio** is to revive natural elements through tile. The hand-crafted tiles in the collection recreate the typical atmospheres of nature through suggestive floral wonders, such as ferns, brambles and cactus. The hand-painted ceramic tiles in Verde Veritcale can be combined with the most modern furnishings for a green chic style. WWW.FRANCESCODEMAIO.IT

D

Color and geometry are the winning elements of **Graph**, the new glazed porcelain stoneware collection by **Ceramica Vogue**. Available in three rectified formats and 14 neutral tones and 15 bright colors, **Graph** has a micro geometric surface texture which gives new meanings to basic colors. The neutral shades, with colored body, are ideal for residential and non-residential flooring, while the brighter tones allow for pleasing coating compositions capable of enhancing modern environments. WWW.CERAMICAVOGUE.COM

E

Crossville, Inc. launched a new porcelain tile collection, **Bohemia**. Taking inspiration from the history and spirit of nomadic cultures, the line offers unconventional takes on texture and color. Field tiles are available in two large format sizes, 12 x 24 and 24 x 24 inches, and are rectified for exact size consistency. Two mosaic options are also available. **Bohemia** is offered in eight nuanced colors in a fabric-like, unpolished finish that is simple to maintain and highly durable. WWW.CROSSVILLEINC.COM

F

Inspired by an icon of silent films, the actress **Louise Brooks**, **Valentina** is one of the most renowned comic book characters in the world: the only female main character. The beloved comic by **Guido Crepax** has essentially come to life in a glamorous tile collection by **Del Conca**, featuring classic black and white designs. The **Valentina** collection is available in two decors, 50 x 20 and 20 x 50 cm. WWW.DELCONCA.COM

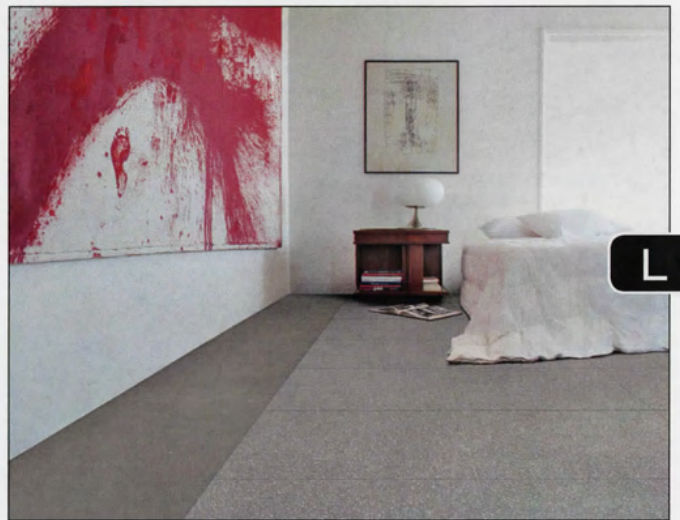
G

Ege Seramik has captured nuances and beauty of a soft textile in its latest glazed porcelain tile collection, **Oxford**. The Oxford collection emulates the look of carpet, while delivering the performance of porcelain tile. Each satin-finish tile is slightly textured and can be installed with minimal grout lines to provide a very clean, almost monolithic look. Three field colors — **Beige**, **Brown** and **White** — can be combined with each other and with the special “**Code Mix**” deco in numerous ways, resulting in each installation offering a unique expression. WWW.EGESERAMIK.COM

H

Craft is a crisp, contemporary approach to wall design from **Emser Tile**. **Craft** is an intriguing statement tile in a 3- x 12-inch format. Classic neutrals take on an undulating glossy finish for a refreshing complement to any decor in residential and commercial environments. **Shadow** and **light** are reflected across horizontal panels to encourage movement along a surface, making this collection especially suited for large accent walls. WWW.EMSERTILE.COM

Product Showcase



I Classic designs paired elegantly with modern formats make **Florida Tile's Ainslee Park^{HDP}** the perfect option for today's easy eclectic spaces. Marble looks feature bold graphics that allow each color to be a standout in the crowded world of interior decor. Glossy ceramic wall and matte porcelain floor tile coordinate beautifully to allow for a continuous design theme throughout any space. The collection is available in four distinct colors – Breccia Mist, Emperador Beige, Calacatta Gold and Zebrino Taupe.
WWW.FLORIDATILE.COM

J **Island Stone** is proud to offer an industry first: Spindrift. Sleek and striking, while keeping the appeal of nature's raw allure, this glass mosaic tile brings the beauty of the great outdoors inside. Spindrift combines the comfort and class of a flat, matte glass mosaic with the eye-catching shapes and organic styles of stone pebbles. This vibrant mosaic of pebbles is offered in six of the company's popular glass colors, all equipped with opaque white backing for optimum light reflection.
WWW.ISLANDSTONE.COM

K A vivid interplay of color and shape comes alive in the latest additions to **Lunada Bay Tile's** Luce glass mosaic tile collection. With semi-opaque glass and playful forms, new Feather, Fin, Clipper and Hex shapes shimmer in the light, much like the sun glittering across moving water. As light bounces off the surface, the mosaics absorb and reflect nuances of the colors around them
WWW.LUNADABAYTILE.COM

L The beauty of Venetian terrazzo or Venetian Seminato, the classical flooring made up of even very large-diameter pieces of marble and stone, is evoked in Pinch, a porcelain stoneware collection from **Marazzi** that accurately reinterprets its details, colors and patterning. Available in 5 colors, Pinch is produced in both natural and lux versions, as well as a large-format size (120 x120 cm). Its architectural potential is extended by a wide assortment of glossy and matt mosaics in all color variants.
WWW.MARAZZIGROUP.COM